

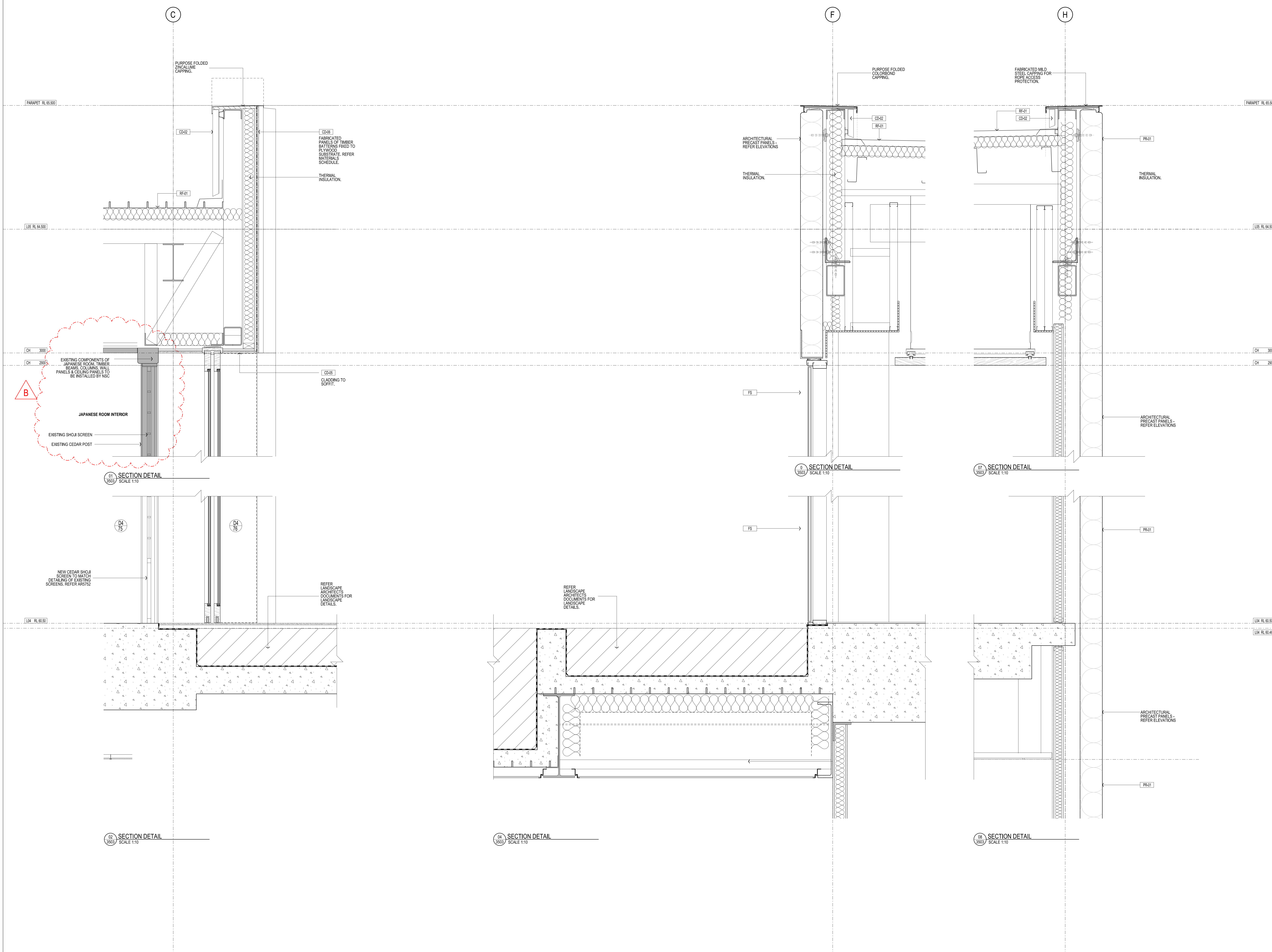
THIS DRAWING IS AN UNCONTROLLED COPY UNLESS STAMPED OTHERWISE

CONTRACTORS SHALL VERIFY JOB DIMENSIONS BEFORE ANY JOB COMMENCES. ALL SHOP DRAWINGS SHALL BE SUBMITTED TO THE SUPERINTENDENT AND MANUFACTURER SHALL NOT COMMENCE PRIOR TO THE RETURN OF DIMENSIONED SHOP DRAWINGS REVIEWED BY THE CONSULTANT. FIGURED DIMENSIONS SHALL TAKE PRECEDENCE OVER SCALES. THIS DRAWING SHALL BE READ IN CONJUNCTION WITH ALL RELEVANT CONTRACT SPECIFICATIONS AND DRAWINGS COPYRIGHT OF THIS DRAWING IS VESTED IN NADAAA.

General Notes

REFER ARCHITECTURAL DRAWINGS:

FACADE SETOUT AR1502-AR1507
 PRECAST SETOUT AR1512-AR1517
 SCREEN SETOUT AR1502-AR1557
 SCREEN DETAILS AR6550-AR6554



Rev	Issue	Revision Description	And	Date
B	SG	UPDATES AS CLOUDED	-	15.07.14
A	SG	ISSUES FOR CONSTRUCTION	-	21.08.13
05	SG	TENDER ISSUE	-	16.04.13
04	SG	VALUE MANAGEMENT ISSUE	-	28.03.13
03	SG	PRECAST REVIEW	-	21.03.13
02	SG	100% CD - TENDER ISSUE - UPDATE	-	12.09.12
01	SG	100% CD - TENDER ISSUE	-	07.09.12

Rev	Issue	Revision Description	And	Date
B	SG	UPDATES AS CLOUDED	-	15.07.14
A	SG	ISSUES FOR CONSTRUCTION	-	21.08.13
05	SG	TENDER ISSUE	-	16.04.13
04	SG	VALUE MANAGEMENT ISSUE	-	28.03.13
03	SG	PRECAST REVIEW	-	21.03.13
02	SG	100% CD - TENDER ISSUE - UPDATE	-	12.09.12
01	SG	100% CD - TENDER ISSUE	-	07.09.12



NADAAA
 NADAAA
 1520 Washington Street No.2 Boston Massachusetts 02118 USA
 Telephone: +1 817 442 8232
 Facsimile: +1 888 442 1417
 Email: nadaa@nadaaa.com

John Wardle Architects
 25 Rokeby Street, Collingwood, Victoria 3066 Australia
 Tel: +61 3 8662 0400 www.johnwardlearchitects.com
 © 2012 John Wardle Architects ABN 83 006 814 268

Client: University of Melbourne Parkville Campus

Project: Faculty of Architecture Building and Planning

Title: SECTION DETAILS SHEET 21

Project No.	0913	Scale	1:10 @ A0 1:20 @ A2
Drawing No.	AR6120	Revision	B

Date: Dec 2011 Dwn - Co-Ord - Chk -

FILENAME - \$FILES

FOR CONSTRUCTION